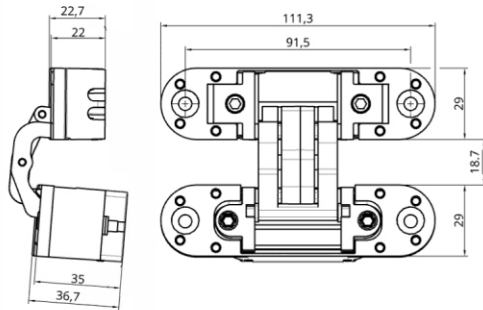
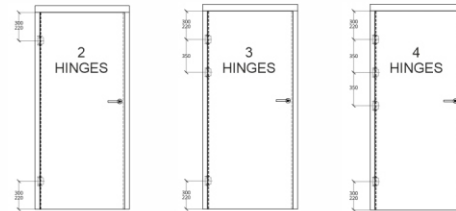




# J111x29 INSTALLATION INSTRUCTIONS



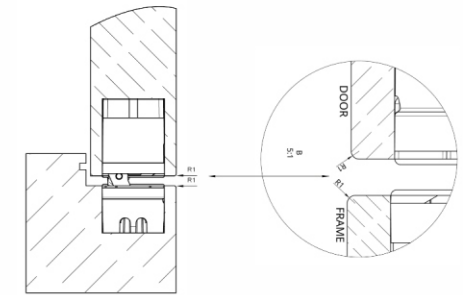
**HINGE DIMENSIONS**



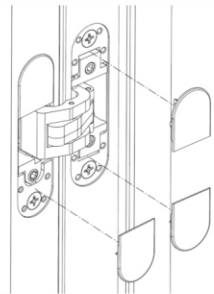
**HINGES ARRANGEMENT**



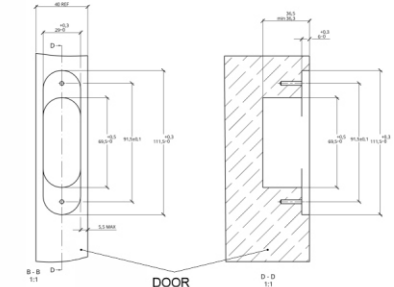
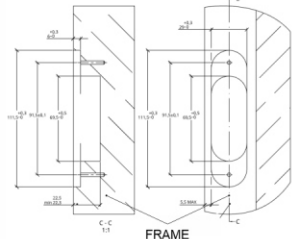
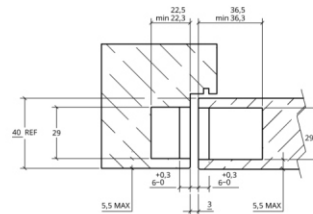
**HINGES POSITION**



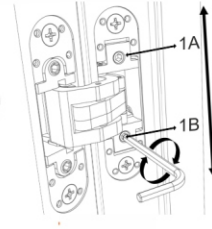
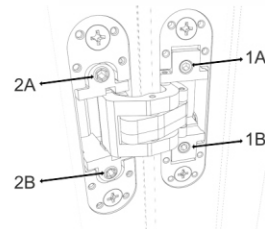
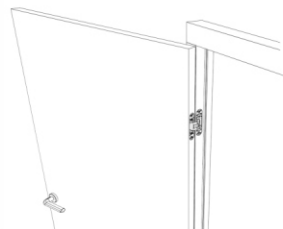
**RADIUS R1**



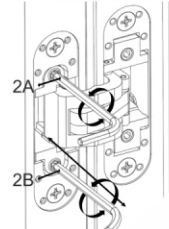
**COVERS**



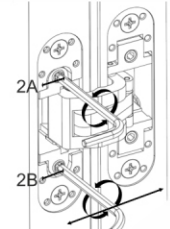
**MILLING DIMENSIONS**



HIGH



DEPTH



SIDE

**ADJUSTMENTS**

For the adjustment you will need a 4 mn Allen key

Heigh adjustment :

- Make sure that the screw 1A is flush with the front surface of the hinge
- Turn the screw 1B by half a turn on each hinge, then again to reach the good position
- The maximum adjustment of this hinge is  $\pm 2\text{mm}$

Side and depth adjustment.

- For these both adjustments, it's made simultaneously with same eccentric screws 2A and 2B
- Turn simultaneously the screws 2A and 2B on each hinge and screwed it evenly
- The maximum adjustment for the Depth is  $\pm 1 \text{ mm}$ , and  $\pm 2 \text{ mm}$  for the side

At the end you will notice a resistance on each screw

When the adjustment is complete, put the covers back in place