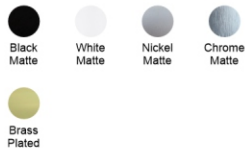




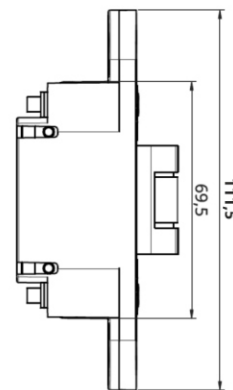
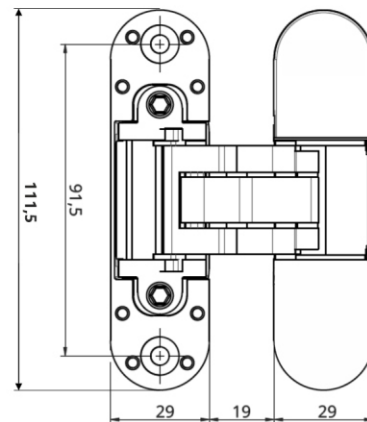
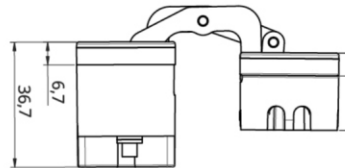
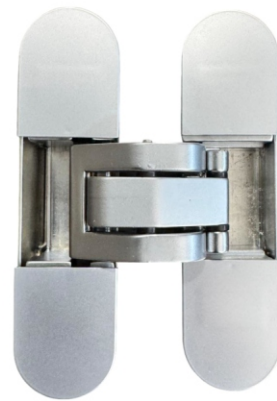
TECHNICAL SHEET
CONCEALED HINGE
 J-111X29

Finishes

CUSTOMIZABLE FINISHES
 AVAILABLE AS AN OPTION



Material: Zamack



Technical Characteristics

- Completely concealed hinge for left and right handed doors.
 - Load capacity 80 kg/2 hinges.
- For use in wooden, steel and aluminium profiles.
 Flush door.
 Lubrification free bearing.
 3D adjustment (side +/-2mm, height +/- 2mm, compression +/- 1mm)
 180° opening angle

Technical Data

Load Capacity*	80 kg
Hinge Height	111,5 mm
Width on Door Side	29 mm
Width on Frame Side	29 mm
Depth on Door Side	36,5 mm
Depth on Frame Side	22,5 mm
Opening Radius	180
Lateral Adjustment	+ 1 mm
Height Adjustment	+/- 2 mm
Depth Adjustment	+/- 2 mm

*Tested on doors measuring 900x2100 mm.

For more information regarding the number of hinges required based on door weight and dimensions, please contact us.

